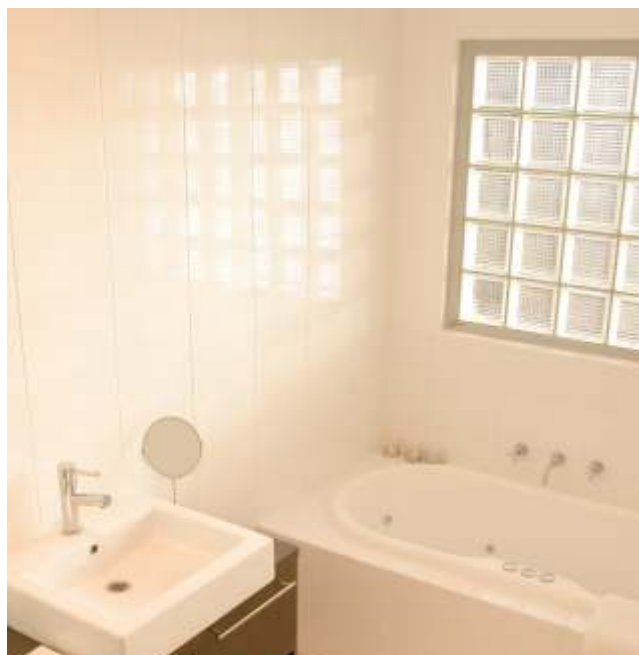


# D.I.Y. FRAMELESS GLASS BLOCK SYSTEM

**Building a glass block feature wall has never been easier. This new frameless system is DIY friendly, enabling you to complete the job like a true professional.**

Australian Patent No 719429



## WHAT DO YOU NEED?

- ☐ 190x190x80mm Glass Blocks
- ☐ PACK "A" = Blokup Horizontal Separation Strips (2/pk) - F/L 6650071
- ☐ PACK "B" = Blokup Vertical Separation Strips (5/pk) - F/L 6650072
- ☐ PACK "C" = Blokup Frameless Anchor Clips (7/pk) - F/L 6650073
- ☐ 300g cartridge of Dunlop Glass Block Adhesive for every 6 blocks - F/L 6820017
- ☐ 5kg of Dunlop Glass Block Grout for every 50 blocks - F/L 6820018
- ☐ Timber screws or masonry anchors (same amount as Pack "C")

## HOW MANY PACKS DO I NEED?

NO. OF GLASS BLOCKS	WIDE					
	ONE	TWO	THREE	FOUR	FIVE	SIX
<b>ONE</b>	1B, 1C	1A, 1C	1A, 1C	1A, 1C	1A, 1C	1A, 1C
<b>TWO</b>	1B, 1C	1A, 1C	1A, 1C	1A, 1B, 1C	1A, 2B, 2C	1A, 2B, 2C
<b>THREE</b>	1B, 1C	1A, 1B, 1C	1A, 1B, 2C	2A, 1B, 2C	2A, 1B, 2C	2A, 2B, 2C
<b>FOUR</b>	1B, 1C	1A, 1B, 2C	1A, 2B, 2C	2A, 1B, 2C	2A, 3B, 2C	2A, 4B, 2C
<b>FIVE</b>	1B, 2C	1A, 1B, 2C	2A, 1B, 2C	3A, 2C	3A, 2B, 2C	3A, 4B, 3C
<b>SIX</b>	2B, 2C	1A, 1B, 2C	3A, 2C	3A, 1B, 3C	3A, 5B, 3C	3A, 6B, 3C
<b>SEVEN</b>	2B, 2C	2A, 3C	3A, 1B, 3C	4A, 3B, 3C	4A, 4B, 3C	4A, 6B, 3C
<b>EIGHT</b>	2B, 3C	2A, 3C	2A, 3B, 3C	4A, 4B, 3C	4A, 5B, 3C	4A, 8B, 3C
<b>NINE</b>	2B, 3C	2A, 1B, 3C	3A, 2B, 3C	5A, 1B, 3C	5A, 4B, 4C	5A, 9B, 4C
<b>TEN</b>	2B, 3C	2A, 1B, 3C	3A, 3B, 4C	5A, 2B, 4C	5A, 5B, 4C	5A, 10B, 4C
<b>ELEVEN</b>	3B, 4C	2A, 2B, 4C	3A, 4B, 4C	6A, 1B, 4C	6A, 6B, 4C	6A, 10B, 4C
<b>TWELVE</b>	3B, 4C	2A, 3B, 4C	3A, 5B, 4C	6A, 3B, 4C	6A, 7B, 4C	6A, 12B, 5C
<b>THIRTEEN</b>	3B, 4C	2A, 3B, 4C	4A, 3B, 4C	7A, 1B, 5C	7A, 7B, 5C	7A, 12B, 5C
<b>FOURTEEN</b>	3B, 4C	3A, 1B, 5C	4A, 5B, 5C	7A, 3B, 5C	7A, 8B, 5C	7A, 14B, 5C
<b>FIFTEEN</b>	3B, 5C	3A, 2B, 5C	4A, 6B, 5C	8A, 2B, 5C	8A, 8B, 5C	8A, 15B, 5C
<b>SIXTEEN</b>	4B, 5C	4A, 5C	5A, 7B, 5C	8A, 4B, 5C	8A, 10B, 6C	8A, 16B, 6C

# D.I.Y. FRAMELESS GLASS BLOCK SYSTEM

## BEFORE YOU GET STARTED

- ✦ Pack "A" contains your horizontal separation strips - These go the full width of your opening, placed below your first row of blocks, then between every course horizontally
- ✦ Pack "B" contains your vertical separation strips - These go between every single block vertically
- ✦ Pack "C" contains your frameless anchor clips - These are placed on either end of the horizontal strips and also onto every vertical strip, between the blocks, on your very top row
- ✦ Tools require - hacksaw, silicone gun and screwdriver
- ✦ Other requirements - Dunlop Glass Block Adhesive (1 tube for every 6 blocks), Dunlop Glass Block Grout (5kg for every 50 blocks) and screws or masonry anchors (same amount as frameless anchor clips in Pack "C").

## INSTALLATION PROCEDURE

- 1 Determine & create your clear internal finished opening.**  
Use multiples of 193mm for both the height and the width, but you must add an extra 3mm for clearance eg: 6 blocks high x 3 blocks wide  $(6 \times 193) + 3 = 1161\text{mm}$  High x  $(3 \times 193) + 3 = 582\text{mm}$  Wide
- 2 Cut your horizontal separation strips (pack "A") to size**  
Cut these to 20mm less than the size of your opening width (eg: 562mm)  
**TIP:** Utilise any off-cuts. Cut @ 180mm & use as more vertical strips
- 3 Place a frameless anchor clip (pack "C") onto each end of your horizontal separation strips**
- 4 Locate the position of your blocks in your wall thickness**  
By placing your first horizontal strip with anchor clips, along the base of your opening and fixing through the frameless anchor clips into the sides of your opening.
- 5 Place a line of silicone through the centre line only of the separation strip**
- 6 Lay your first glass block**
- 7 Place a line of silicone down the edge of the glass block, through the centre only**
- 8 Place a vertical separation strip (pack "B") down the edge of the glass block**
- 9 Place a line of silicone down the vertical separation strip, through the centre only**
- 10 Lay your second glass block**  
You're away! Keep going and finish the first row
- 11 Place a line of silicone across the top of the glass blocks through the centre only**
- 12 Place a horizontal separation strip (pack "A") with anchor clips, along the top of your first row and fix into sides**
- 13 Replace steps 5 through to 12 until your top row**
- 14 Top row:** The only difference here is, on every vertical separation strip, you also use a frameless anchor clip to fix into the top of your opening
- 15 You've finished "Blokup"- ing the panel, time to "grout"**  
Grouting is completed by applying per the instructions on the tub
- 16 Cleaning**  
Once dry, clean with a dry rag, buff & polish

# D.I.Y. FRAMELESS GLASS BLOCK SYSTEM

